

# Appendix B

## Air-Space Investigations

### I-65 Corridor Planning Study Bridge Cost Opinion Summary

Kentucky Transportation Cabinet

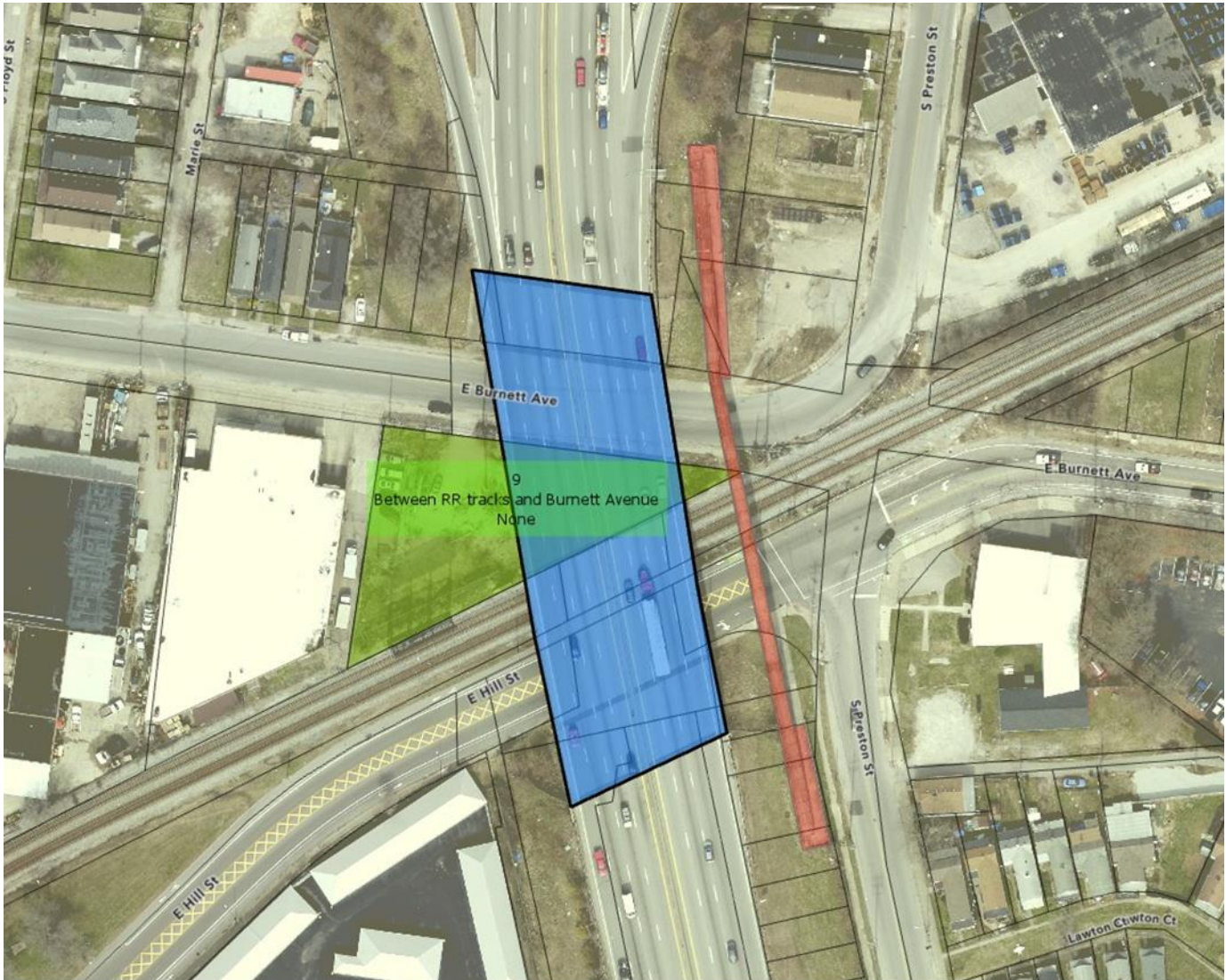
Project number: KYTC Item No. 5-569

October 2021

# I-65 Air-Space Agreements

Bridge 056B00179N

Bridge over Hill/CSX/Burnett at MP 133.873



# 9 in the graphic above

Pages N/A – not included in I-65 Bridge Improvement Study (2019) Appendix C

KYTC property – No Air-Space Agreement

Between RR tracks and Burnett Avenue

Former location of KYTC Traffic Maintenance Facility. Lou-Metro Traffic Engineering also used the lot at one time. Currently, KYTC has not permitted anyone to use the lot per Tom Wright. Tom indicated no issue if the lot were “filled-in”.

Discussion with adjacent property owner – John F. Trompeter Company follow.

## Callihan, John

---

**From:** Callihan, John  
**Sent:** Monday, June 21, 2021 3:41 PM  
**To:** Niemann, Elizabeth A (KYTC); 'Bullock, Matt (KYTC-D05)'  
**Cc:** Hall, Tom B (KYTC-D05); Andy.Rush@kipda.org; Royce Meredith (Royce.Meredith@ky.gov); Wright, Tom J (KYTC-D05); Ryan Holmes; brian.meade@aecom.com; Thompson, Rebecca; daven@johntrumpeter.com  
**Subject:** KYTC 5-569 - I-65 Corridor Study - Bridge Estimates - John F. Trompeter Company - Surplus Property Inquiry  
**Attachments:** John F Trompeter Property and Surplus Property Request with labels.jpg

Beth and Matt,  
On Friday, June 18, 2021, I met with Dave Nash, VP of the John F. Trompeter Company.

Dave Nash  
314 E. Burnett Street  
Louisville, KY 40208  
(502) 585-5852  
[daven@johntrumpeter.com](mailto:daven@johntrumpeter.com)  
<https://www.trompeters.com/>

Mr. Nash and I discussed the I-65 Corridor Planning Study and the potential replacement of the three bridges along the corridor currently associated with KYTC 5-20061.00.

We examined the ROW under I-65 at the Burnett/CSW/Hill Bridge that is adjacent to the John F. Trompeter Company property at 314 E. Burnett Street.

Mr. Nash explained that he and some other locals try to weed-eat and clean trash from the triangle shaped KYTC lot under I-65 between Burnett and the CSX RR tracks.

He mentioned his company's desire to obtain a strip of property that appears surplus to the needs of KYTC.

I have attached a map showing this strip of land.

Though design of a new replacement bridge has not been initiated, my initial opinion is that this strip of land would very likely be and will remain surplus to KYTC's needs.

I recommend that, upon initiation of design for the replacement of the bridge at Burnett/CSW/Hill (056B00179N), KYTC and/or KYTC's design consultant, give consideration of a formal request from John F. Trompeter Company for this strip of land.

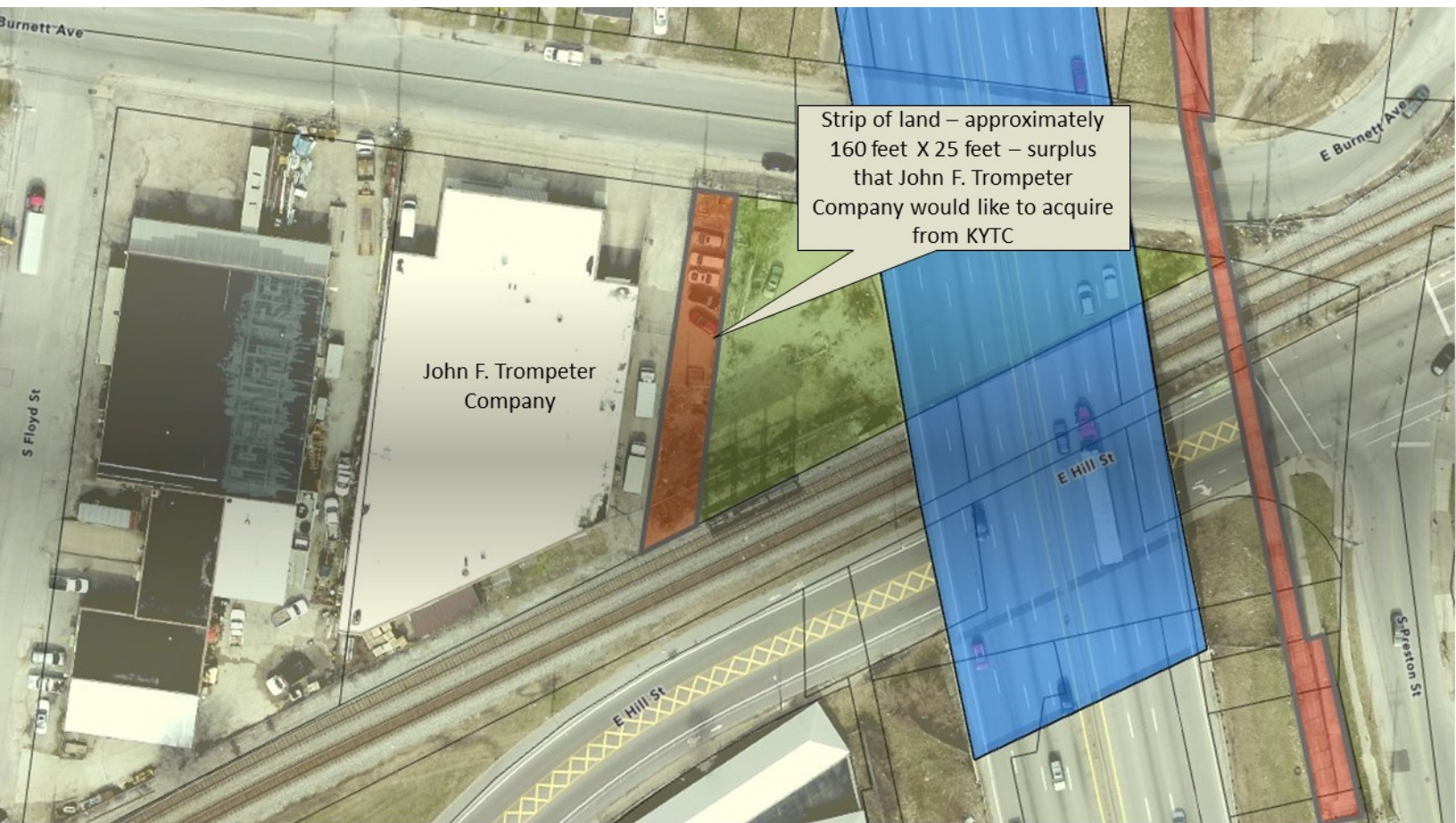
Mr. Nash indicated that his company would like to construct secure parking, perhaps a small garage on the strip of land. He also indicated that they would like to help maintain any right of way under I-65 at this location upon completion of the potential project.

With your concurrence (or with your comments), I will include this e-mail and attachment as part of the stakeholder/public engagement record for KYTC 5-569 - I-65 Corridor Study Report.

Respectfully,

**John Callihan, PE, PMP, LEED AP**  
Senior Project Engineer, Transportation  
D +1-502-434-3850  
M +1-502-905-1992  
[john.callihan@aecom.com](mailto:john.callihan@aecom.com)





Strip of land – approximately  
160 feet X 25 feet – surplus  
that John F. Trompeter  
Company would like to acquire  
from KYTC

John F. Trompeter  
Company

E Hill St

E Burnett Ave

E Hill St

S Preston St

S Floyd St



# I-65 Air-Space Agreements

Bridge 056B00183N

Bridge over Kentucky/Brook at MP 134.753



# I-65 Air-Space Agreements

Bridge 056B00183N

Bridge over Kentucky/Brook at MP 134.753

# 7 in the graphic on the previous page

Pages N/A – not included in I-65 Bridge Improvement Study (2019) Appendix C

Heuser Hearing Institute

Brook and Kentucky (Northwest quadrant)

Brett Bachmann J.D. LL.M

Chief Executive Officer

Heuser Hearing Institute

Heuser Hearing & Language Academy

111 E. Kentucky Street • Louisville, KY 40203 • [www.thehearinginstitute.org](http://www.thehearinginstitute.org)

p: 502-515-3320 • f: 502-515-3325 • [bbachmann@thehearinginstitute.org](mailto:bbachmann@thehearinginstitute.org)

Mr. Bachmann believes they have had an airspace agreement for 22+ years. He is doubtful they will be able to find a copy. He very much wants to keep the parking.

# 8 in the graphic on the previous page

Pages N/A – not included in I-65 Bridge Improvement Study (2019) Appendix C

KYTC – No Air-Space Agreement

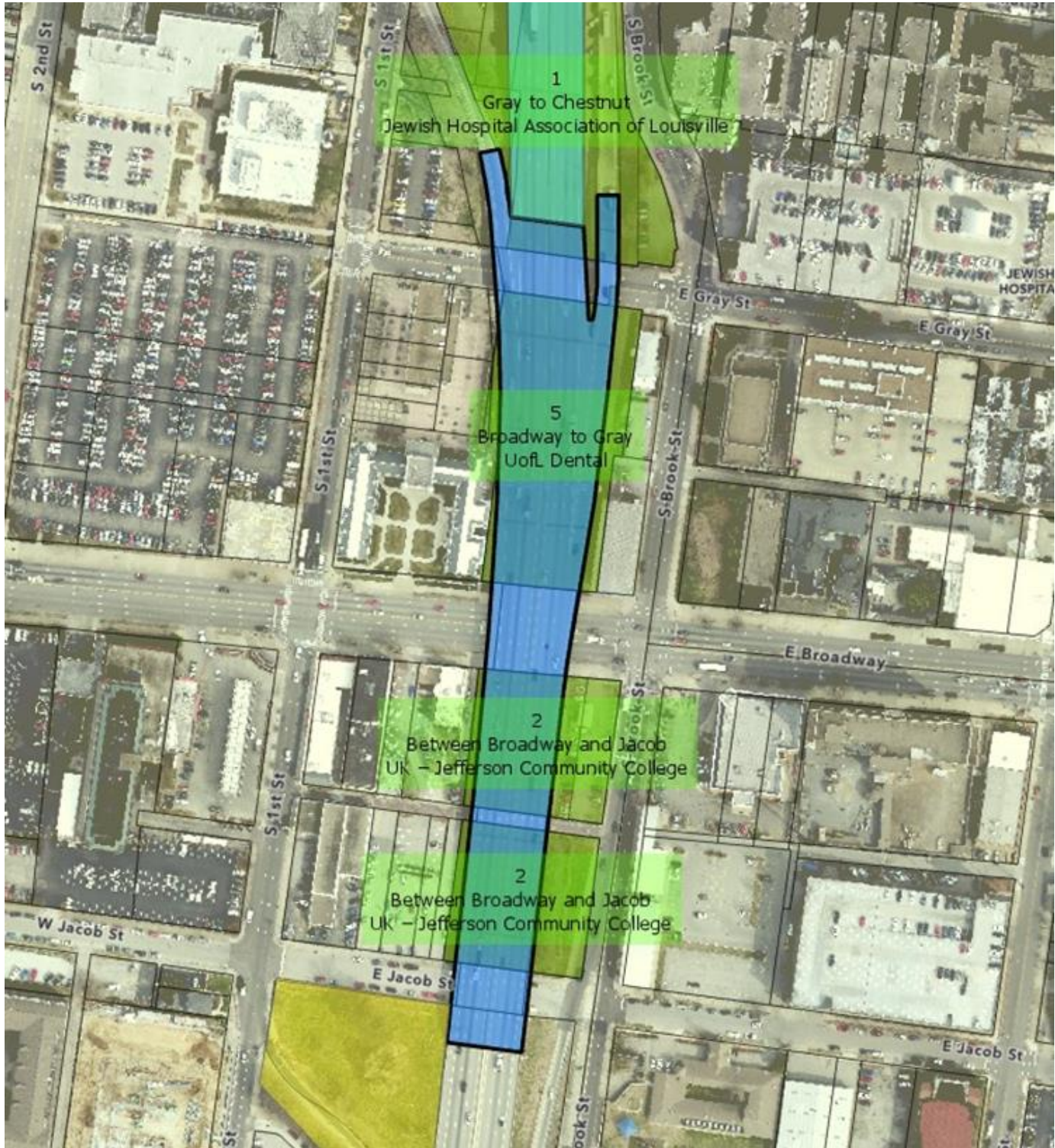
Adjacent to I-65 SB ramp to St. Catherine (between St. Catherine and Kentucky Street)



# I-65 Air-Space Agreements

Bridge 056B00191N

Bridge over Jacob/Broadway/Gray at MP 135.273



# I-65 Air-Space Agreements

## Bridge 056B00191N

### Bridge over Jacob/Broadway/Gray at MP 135.273

# 1 in the graphic on the previous page

Pages 1-8 in I-65 Bridge Improvement Study (2019) Appendix C

Between Gray and Chestnut and the southeast corner of Brook and Walnut Streets

Jewish Hospital Association of Louisville

Charging no fee in excess of that necessary to pay the cost of operation

State can revoke - 30-day notice

May 6, 1965

# 2 in the graphic on the previous page

Pages 9 – 26 in the I-65 Bridge Improvement Study (2019) Appendix C

Between Broadway and Jacob Street

UK – Jefferson Community College

Pavement design is included as part of the encroachment permit

FHWA Management of Airspace policy is included – dated Oct 4, 1974

Airspace Requirements dated April 20, 1967 also included

Parking only – no other use

State can revoke - 30-day notice

Does this go all the way from Jacob to Broadway or just from the alley to Broadway?

1989 – expansion of parking approved

1967 original

# 5 in the graphic on the previous page

Page 40 in the I-65 Bridge Improvement Study (2019) Appendix C

UofL Dental

Broadway to Gray

Mentioned in a memo dated September 13, 1968, but no actual copy of agreement

Parking



# I-65 Air-Space Agreements

Bridge 056B00192N

Bridge over Chestnut at MP 135.43



# I-65 Air-Space Agreements

Bridge 056B00192N

Bridge over Chestnut at MP 135.43

# 1 in the graphic on the previous page

Pages 1-8 in I-65 Bridge Improvement Study (2019) Appendix C

Between Gray and Chestnut and the southeast corner of Brook and Walnut Streets

Jewish Hospital Association of Louisville

Charging no fee in excess of that necessary to pay the cost of operation

State can revoke - 30-day notice

May 6, 1965

# 4 – same as # 1 in the graphic on the previous page

Pages 39 - 44 in I-65 Bridge Improvement Study (2019) Appendix C

Brook and Walnut (now Muhammad Ali)

Jewish Hospital

Parking with no charge beyond cost to operate

30-days revoke

May 6, 1965